

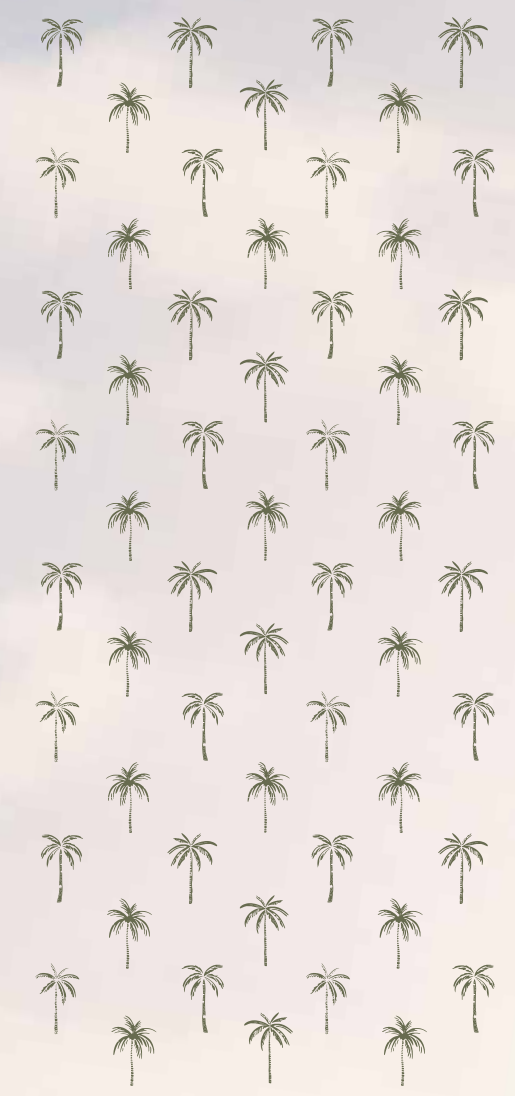
THEY SAY LIFE IS
**BITTER
AND
SWEET**





THEY SAY LIFE IS
**UPS
AND
DOWN**





THEY SAY LIFE IS
**TWISTS
AND
TURNS**





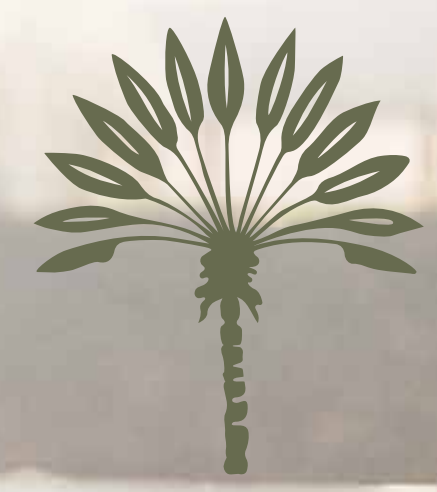
YOU SAY

YES YES YES

BECAUSE YOU
AREN'T EVEN
LISTENING



FOR YOU KNOW
**LIFE
IS A
DATE**





Presenting

Palm grove

YOUR DATE WITH LIFE!

Swipe right on a life that's full of surprises.
Palm Grove, Joka- where every day is
a new adventure and every moment
is a date to remember.



Artist's Impression



Spread over 5 Acres • Exclusive Clubhouse
115 Villas with Private Lawn • Vaastu Compliant

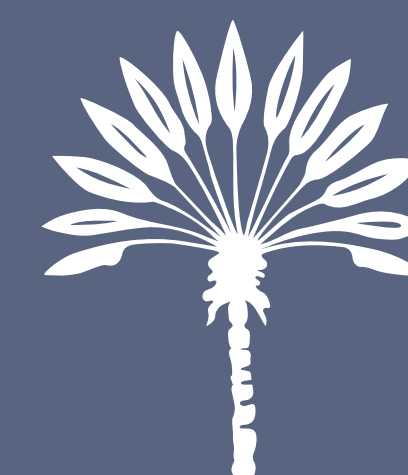
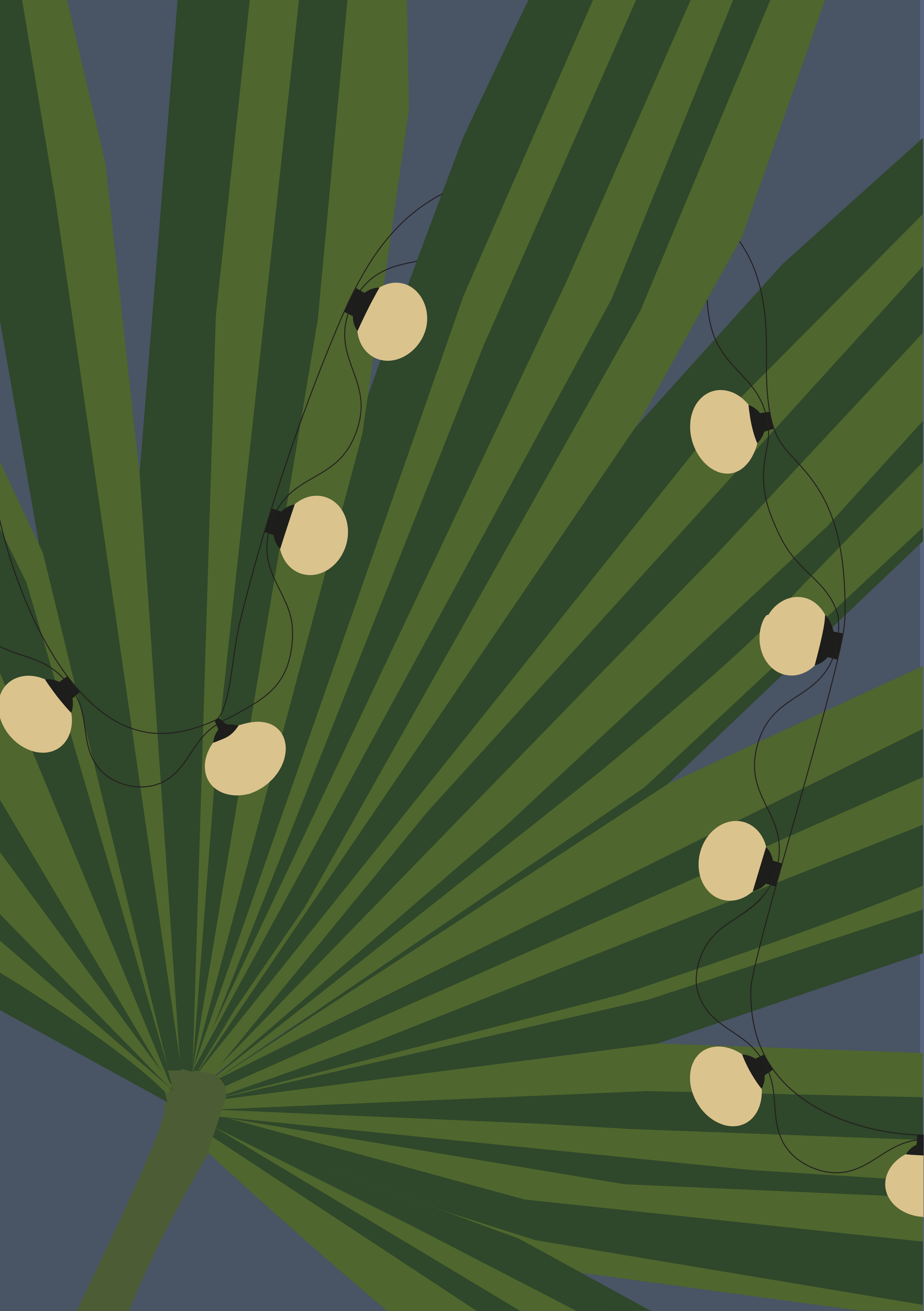


FALLING HEAD OVER HEELS

WITH EVERY DAY!



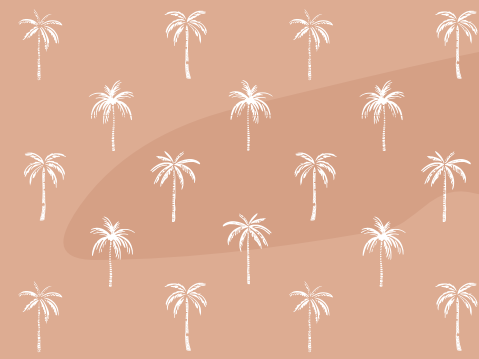
AT PALM GROVE,
LIFE IS LIKE A
FIRST DATE THAT
NEVER ENDS.



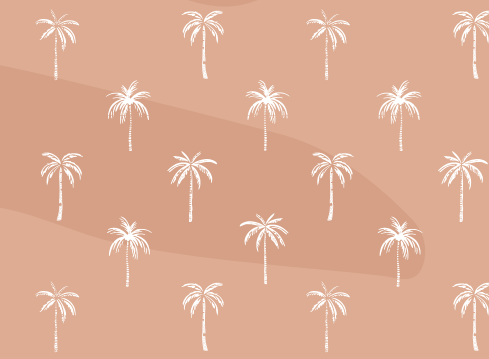
THINK CANDLELIT DINNERS

UNDER THE
STARS





MORNING
WALKS THAT
**TURN INTO
LOVE
STORIES**



AND COSY
EVENINGS THAT
**FEEL LIKE
A WARM
HUG**

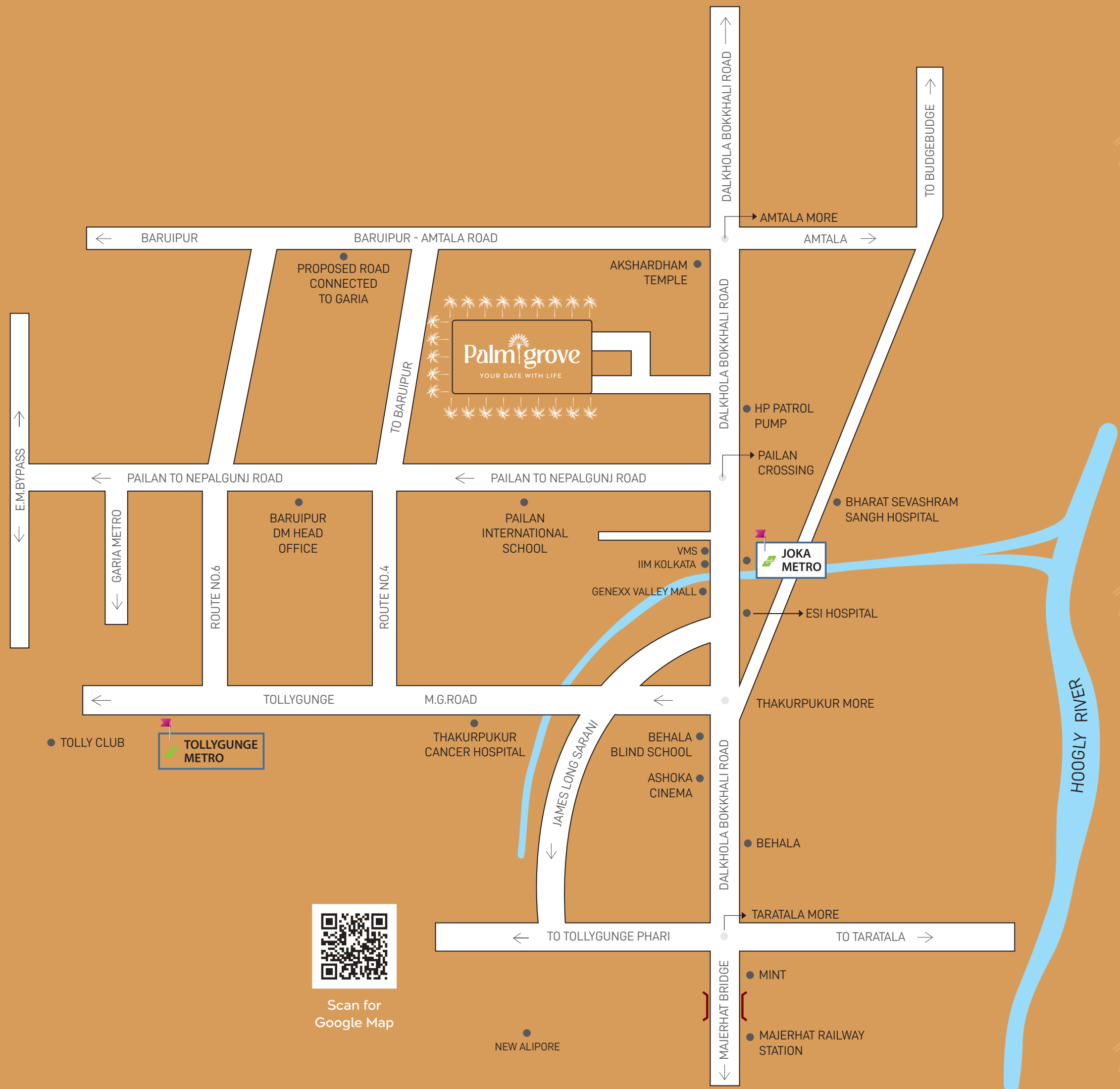


TUCKED AWAY
FROM THE NOISE
BUT STILL CLOSE
ENOUGH TO LIFE'S
ESSENTIALS,
THIS IS WHERE

LOVE AND LIFE BLOOM

Nestled away from the hustle and
bustle of the main road in Joka,
Palm Grove is your quiet
retreat- a cocoon of tranquillity
wrapped in lush green landscapes,
thoughtfully designed row houses,
and the luxury of modern living.

HERE, LIFE IS NOT
JUST LIVED BUT
**SAVOURED
IN EVERY
MOMENT**



Scan for
Google Map

Schools
Vivekananda Mission School ----- 500 m
Gurukul Vidya Mandir Schoo ----- 1 km
Kendriya Vidyalaya IIM-C, Joka ----- 1.4 kms

Hospitals
Medical Unit, IIM Calcutta -----1.5 kms
Kasturi Medical Centre-----2.5 kms
Humanity Hospital-----3.5 kms
CMRI-----11 kms

College
Indian School of Managment-----200 m
ESIC Medical College & Hospital -----500 m
PSIS Hotel Management Institute-----1.7 kms

Connectivity
Joka Metro-----1.9 kms
Howrah-----15 kms
Sealdah----- 16 kms
Airport-----25 kms



Artist's Impression



Entrance Drop Off Area



Artist's Impression

West Facing Villas (3BHK Cute)



Artist's Impression



East Facing Villas (3BHK Bliss)



YOUR SECRET GARDEN OF ROMANCE

Our beautifully landscaped gardens are your daily escape into nature's embrace. Perfect for that early morning yoga, an evening stroll, or a lazy Sunday picnic. Every step you take is a dance with nature, every breath is filled with freshness, and every corner is a story waiting to unfold.





LILY
POOL



SERENITY
GARDEN



FOUNTAIN

GREEN SPACE



REFLEXOLOGY
PATH



STEPPED
SITTING



TREE PITS WITH
GREEN BED



GAZEBO



Artist's Impression



Serenity Garden Area

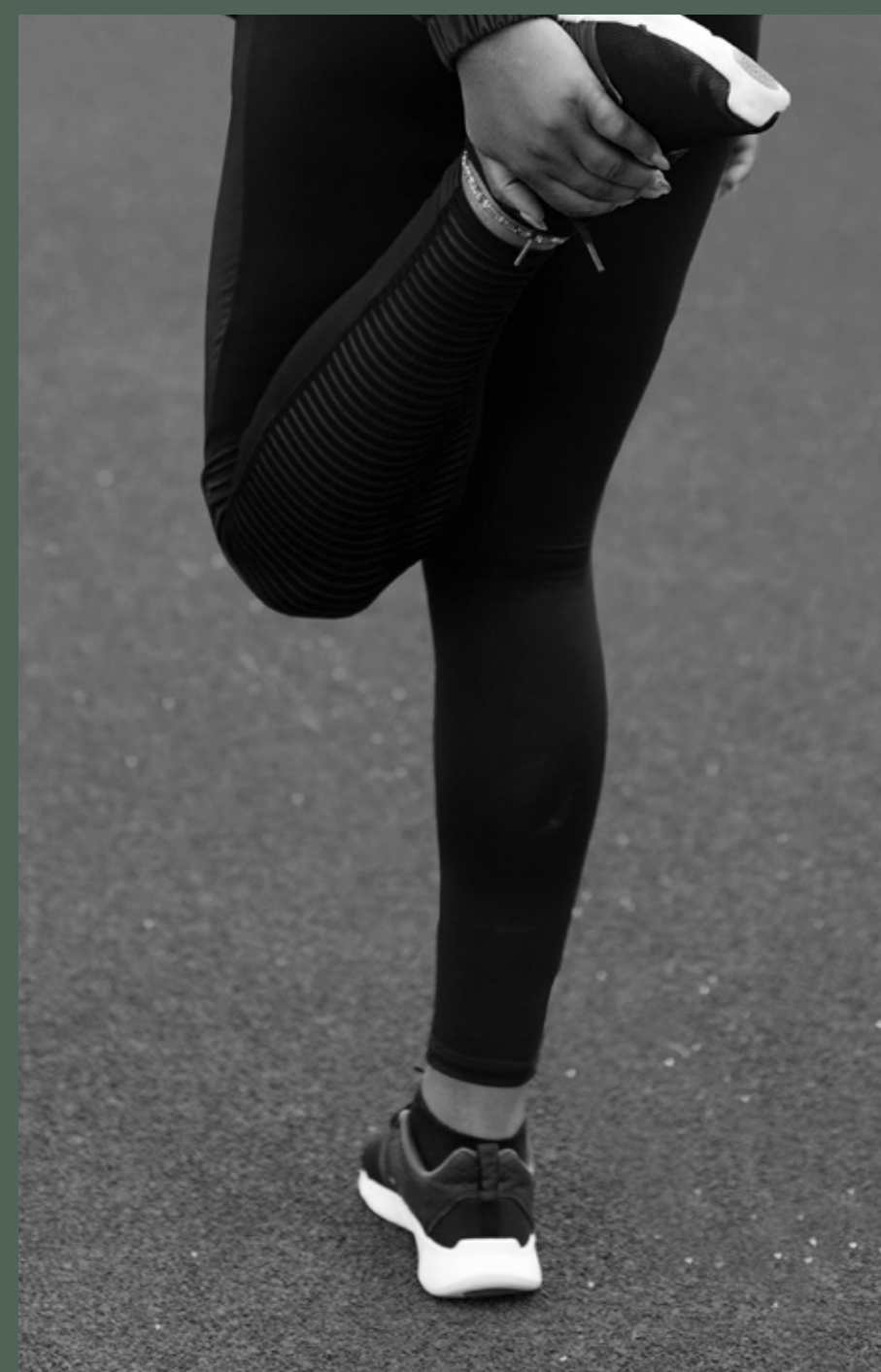


CIRCLE OF LIFE

Imagine living amongst neighbours who feel more like friends. At Palm Grove, you're surrounded by like-minded people who believe that life is meant to be enjoyed. From weekend potlucks to spontaneous get-togethers, life here is about connection, community, and those moments that bring us closer.



CYCLING
PATH



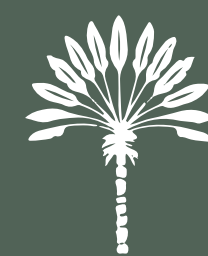
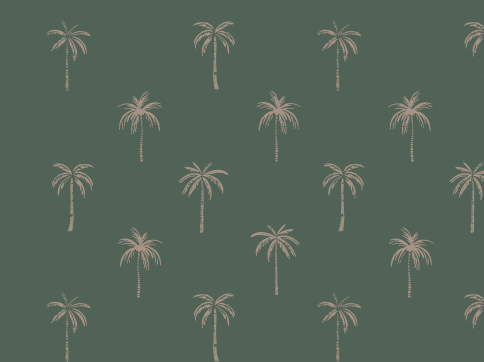
JOGGING
TRACK



WALKING
DECK



ACTIVITY
LAWN



ACTIVITIES



Artist's Impression



Kids' Play Garden

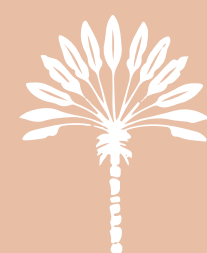


YOUR SOCIAL PLAYGROUND

YOUR HIDEAWAY

What's life without a little fun? The clubhouse at Palm Grove is more than just a building - it's where you unwind, connect, and let loose. From a refreshing swim to a quick workout or just a quiet place to read, the clubhouse is where you make memories that last a lifetime.





CLUBHOUSE AMENITIES



SWIMMING
POOL



GYMNASIUM



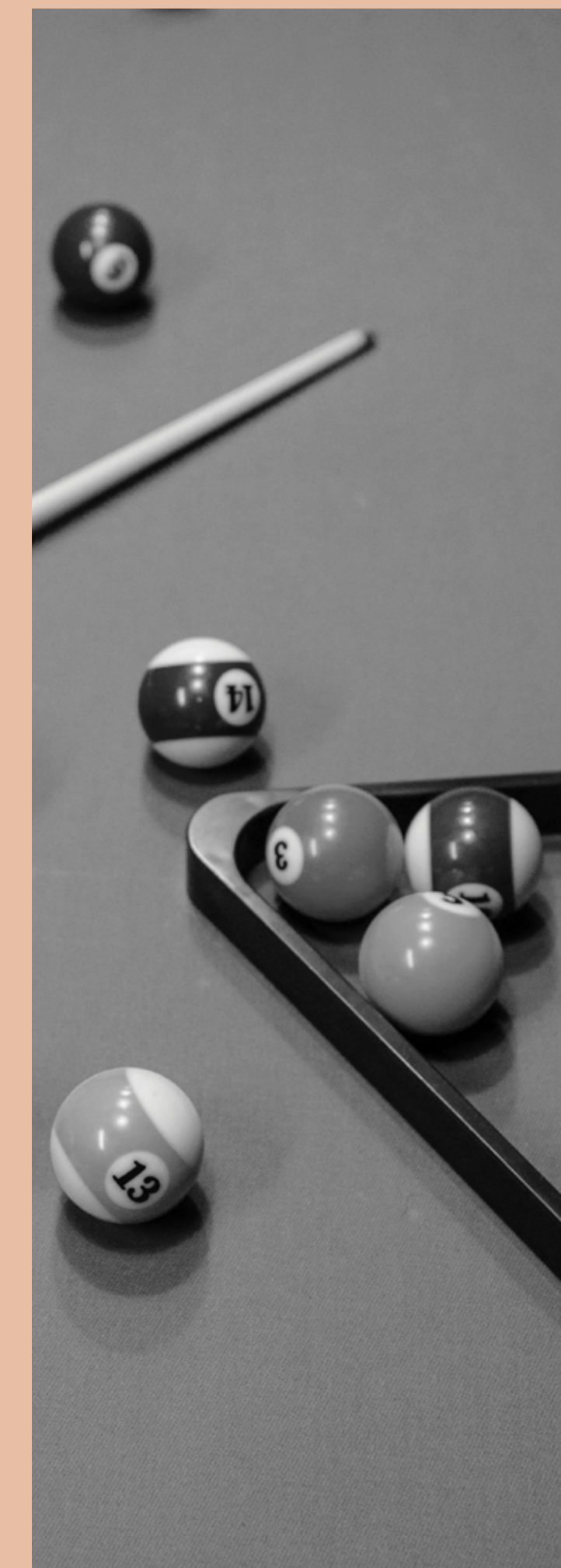
BANQUET



KIDS' PLAY
AREA



AMPHITHEATRE



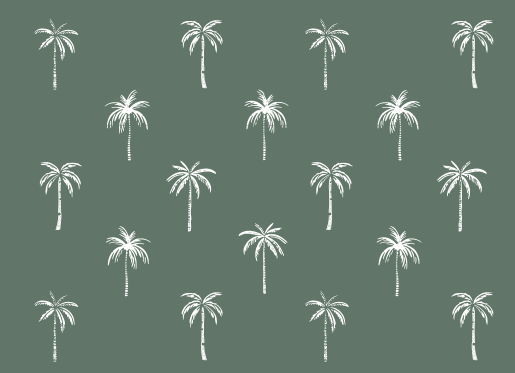
INDOOR
GAMES AREA



Artist's Impression



Clubhouse Entrance



YOUR SAFE HAVEN

With 24/7 security and a community that looks out for each other, Palm Grove isn't just a home; it's a sanctuary. Your date with life should always be carefree, and we make sure of that. So go ahead, sleep soundly, laugh loudly, and live freely.



YOUR INVESTMENT IN HAPPINESS

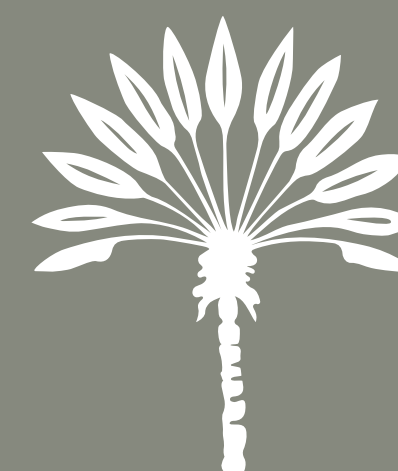
At Palm Grove, you're not just buying a house; you're investing in a lifetime of happiness. A home here is a wise choice, a legacy to pass down, and a decision that future you will thank you for. This isn't just property- it's your piece of paradise.



PLANS

FOR A

PREFECT
DATE



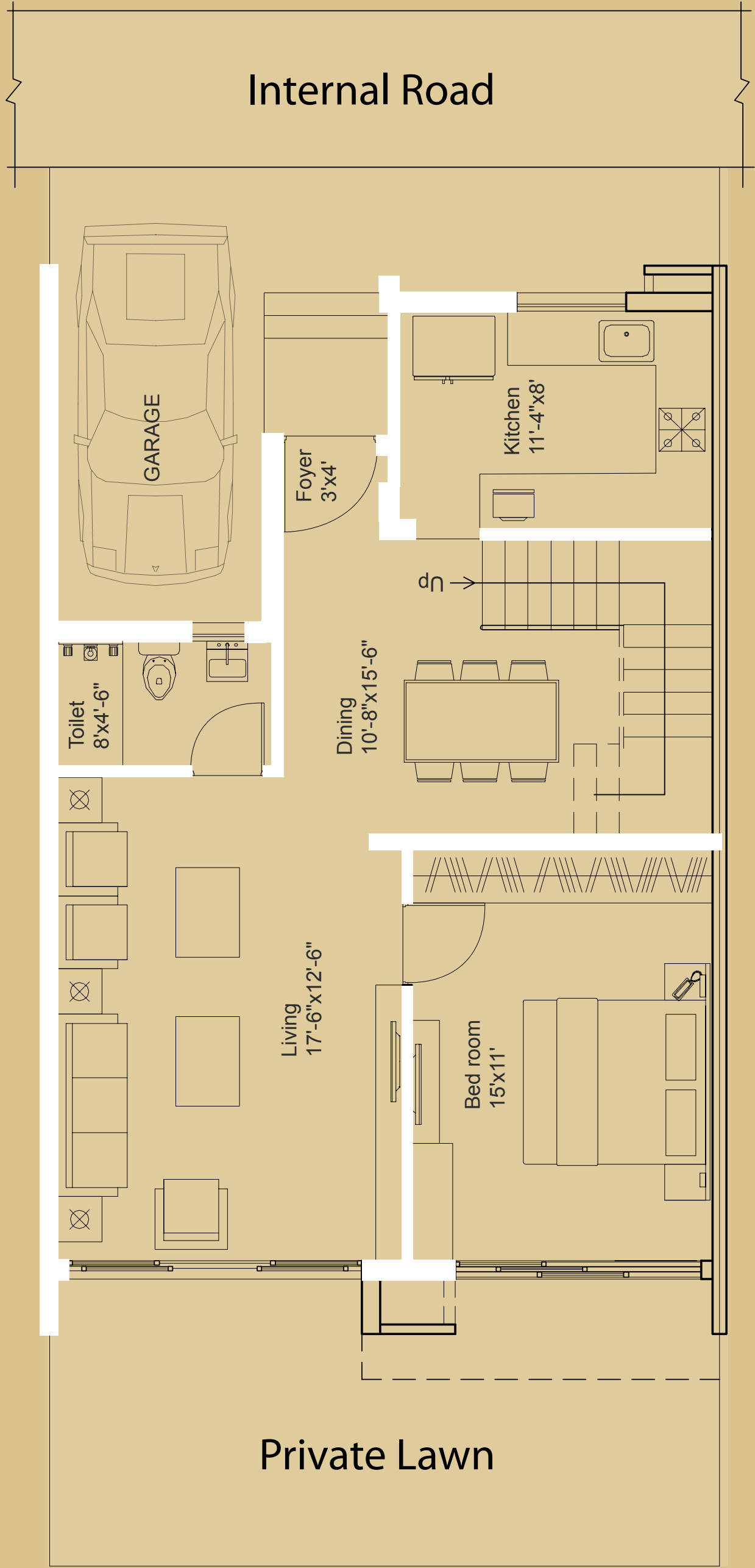
MASTER PLAN



LEGENDS

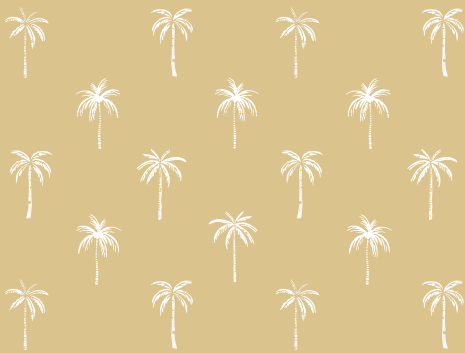
- | | | | | | | |
|----------------------|---------------------|--------------------|------------------|--------------------|---------------------|-------------------------|
| 1 ENTRANCE | 2 CLUB DROP OFF | 3 WATER FEATURE | 4 CLUB LAWN | 5 ARRIVAL DRIVEWAY | 6 DRIVEWAY | 7 NEIGHBOURHOOD STREETS |
| 8 SOCIAL GARDEN | 9 GAZEBO | 10 KID'S PLAY AREA | 11 LAWN | 12 AMPHITHEATRE | 13 PLANTER | 14 SERENITY GARDEN |
| 15 REFLEXOLOGY COURT | 16 STEPPINGS STONES | 17 MOUND | 18 JOGGING TRACK | 19 GUARD ROOM | 20 PERIPHERAL GREEN | |

GROUND FLOOR PLAN

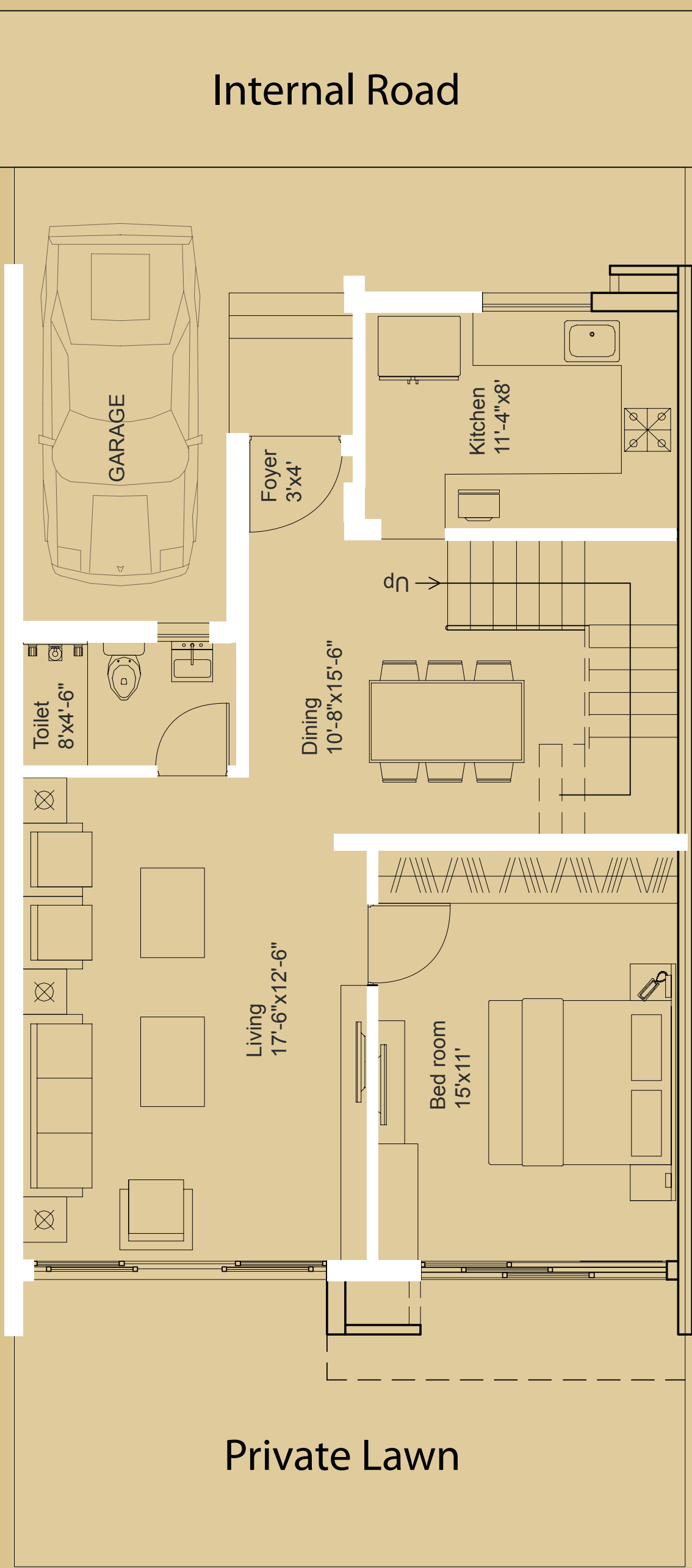


BLISS BUNGALOW

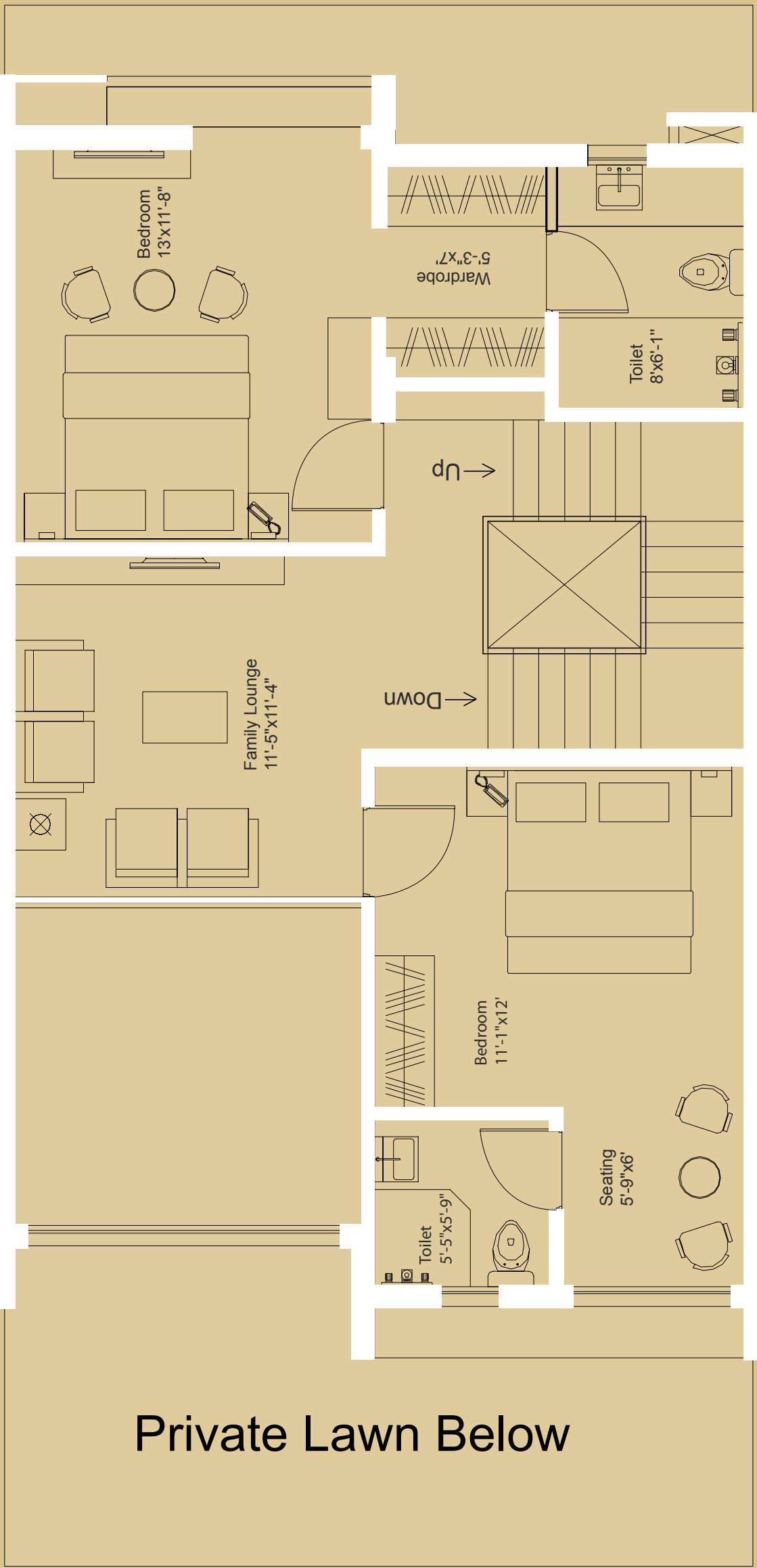
(3 BHK)



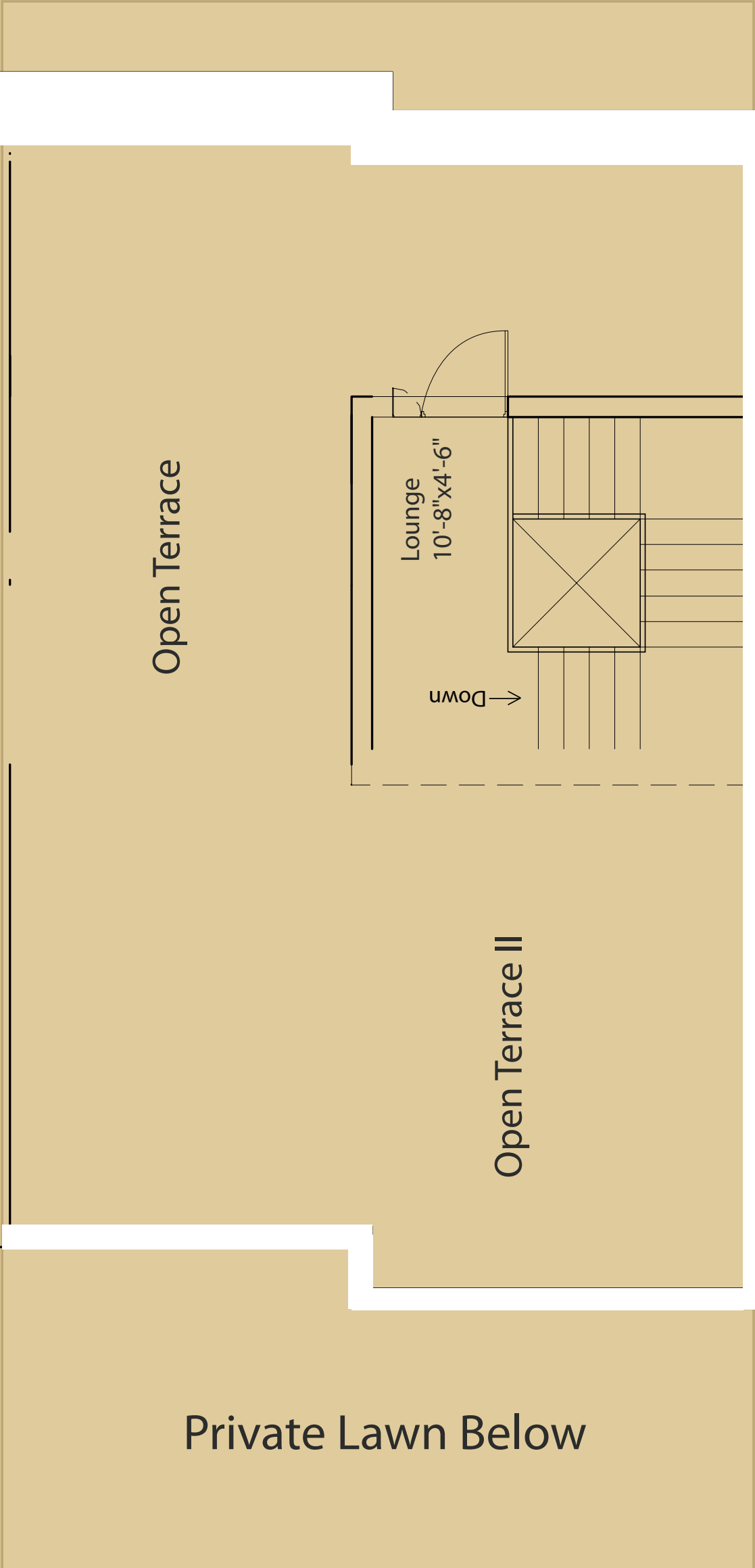
GROUND FLOOR PLAN



1ST FLOOR PLAN

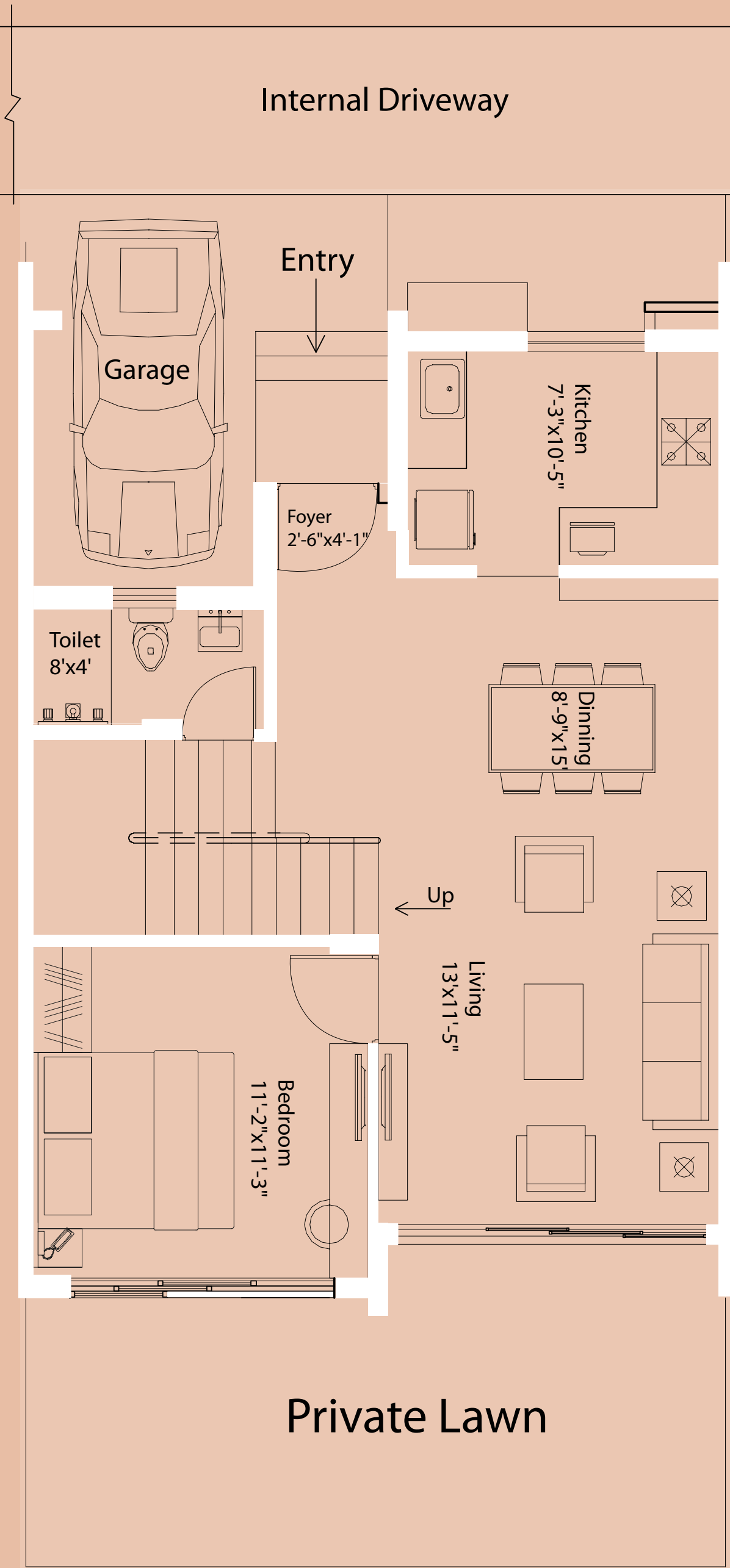


2ND FLOOR PLAN



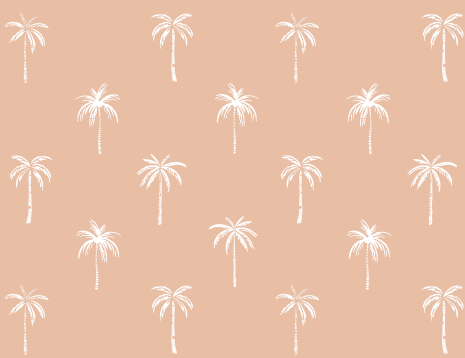
3 BHK(Large)	B.U.A (Sqft)
Ground Floor	890
First Floor	753
Second Floor	75
Total Floor	1718

GROUND FLOOR PLAN

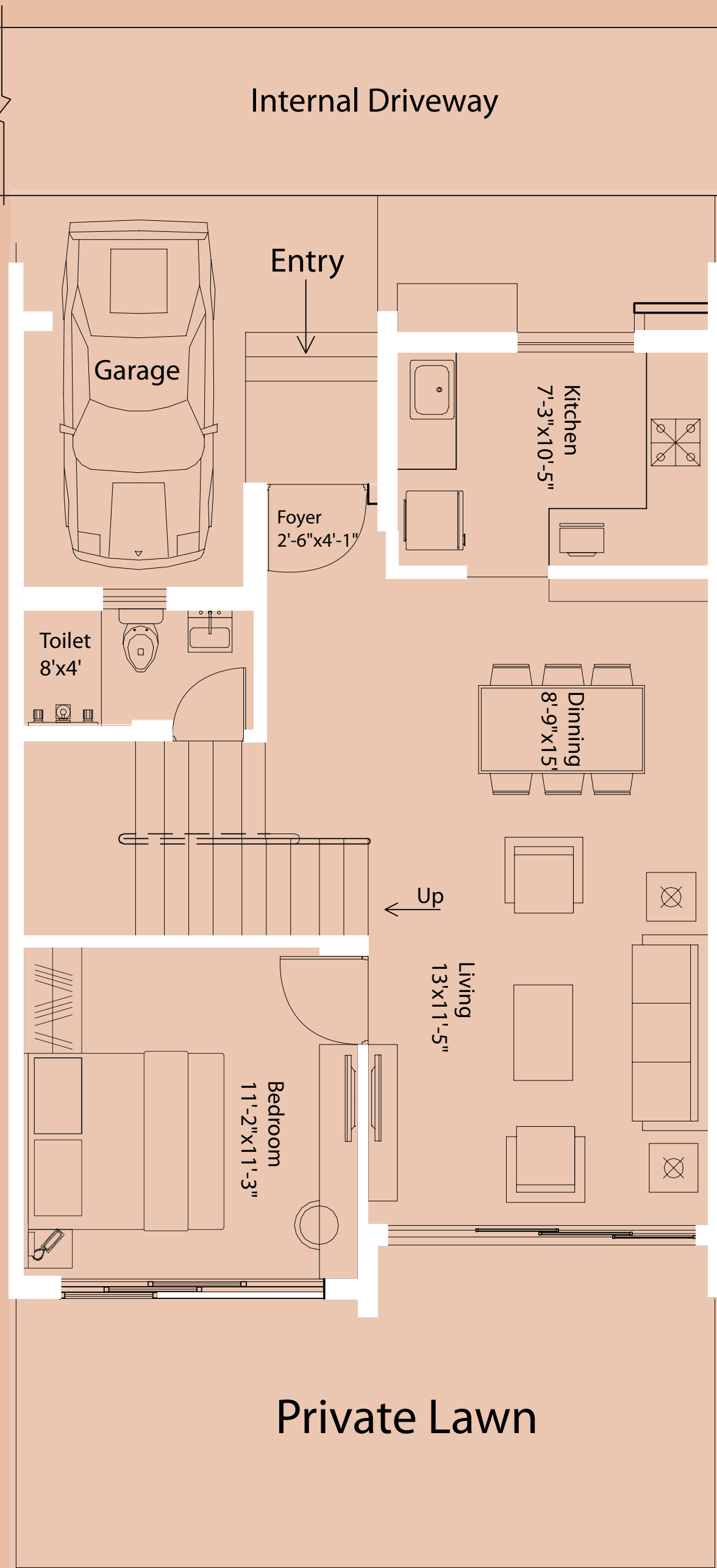


CUTE BUNGALOW

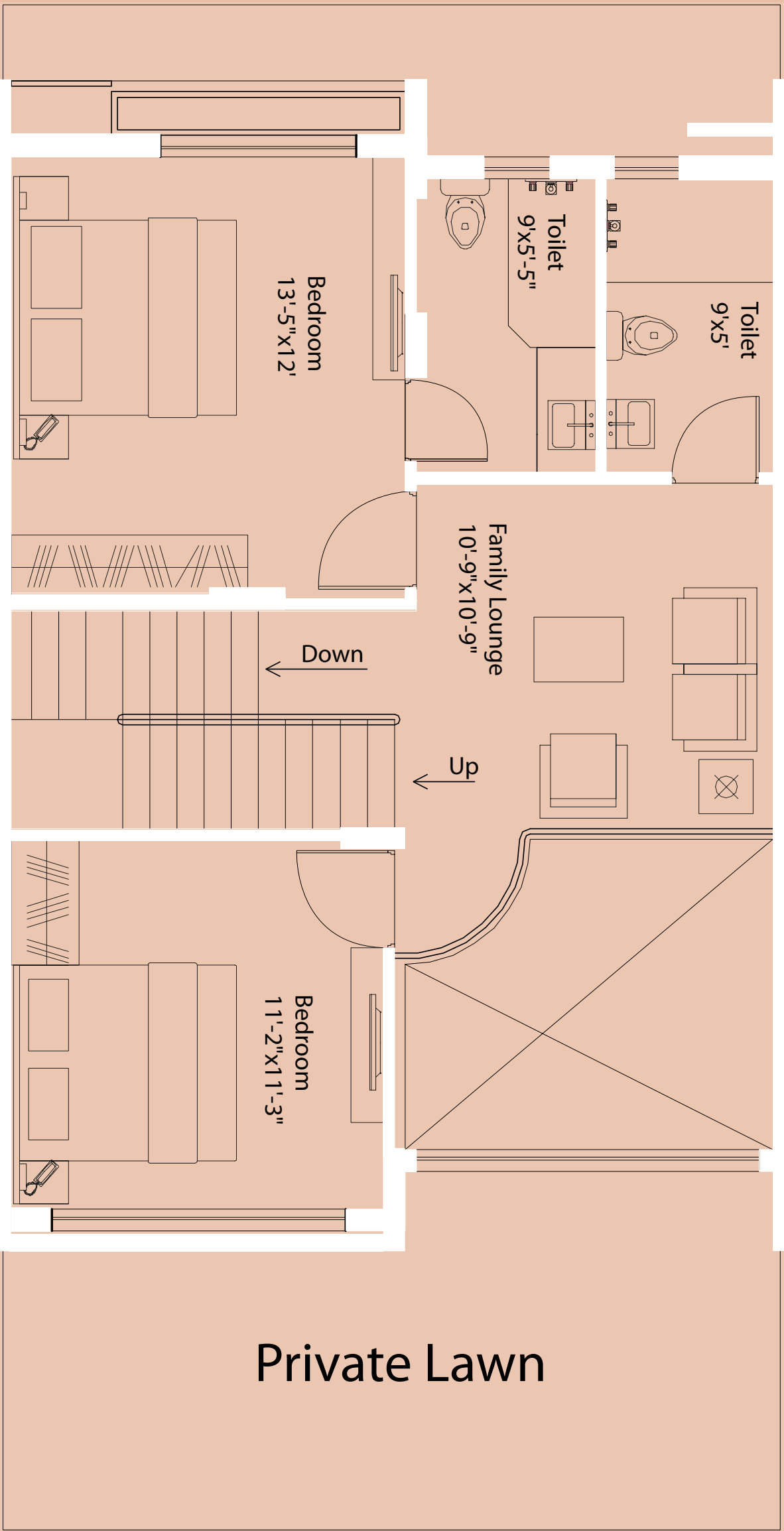
(3 BHK)



GROUND FLOOR PLAN

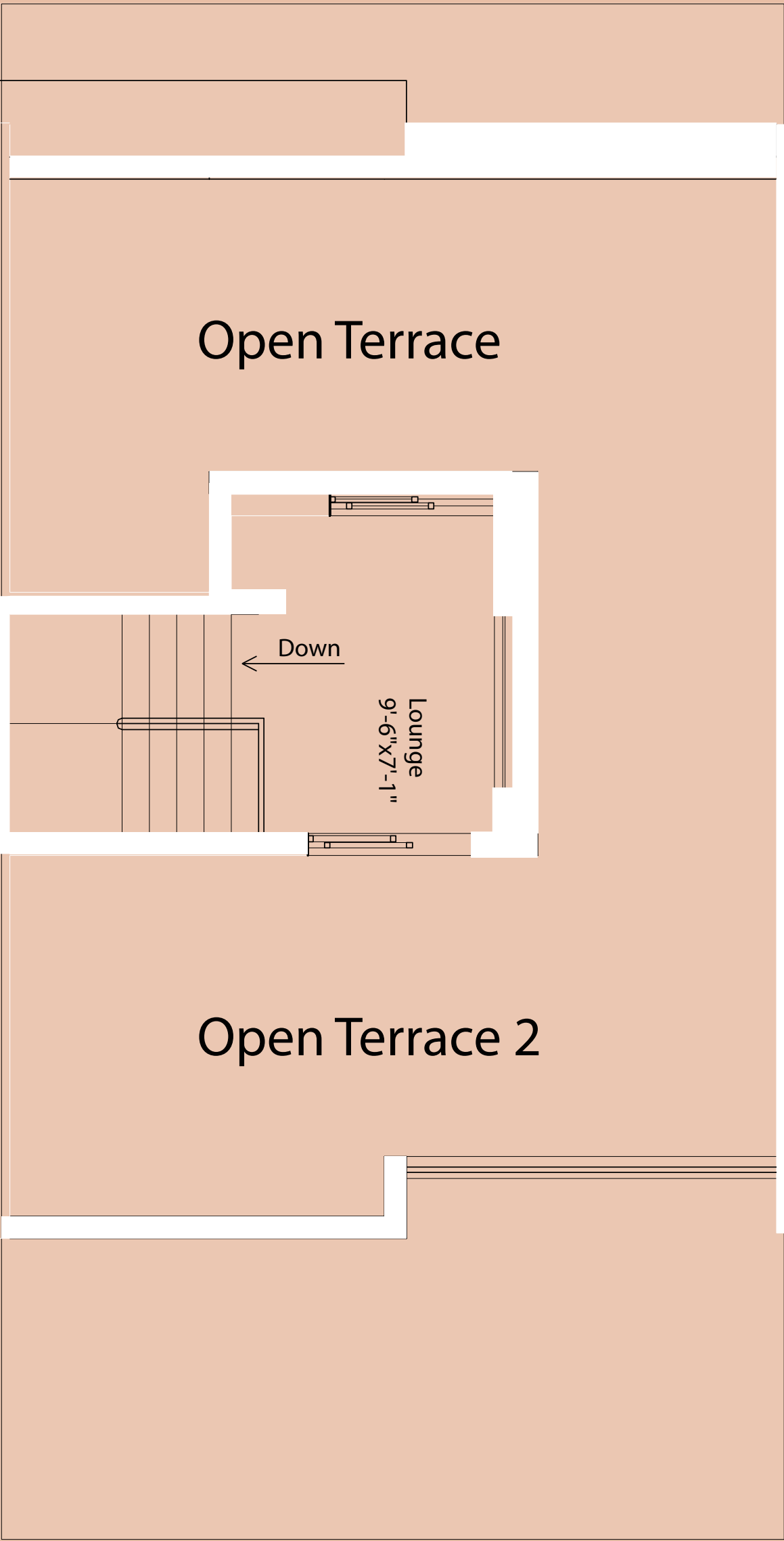


1ST FLOOR PLAN



3 BHK(Large)	B.U.A (Sqft)
Ground Floor	747
First Floor	656
Second Floor	100
Total Floor	1504

2ND FLOOR PLAN





LOVE AFFAIR WITH REAL ESTATE

BUILT TO LAST



Every great romance has a beginning, and ours started over 40 years ago. DTC Group has been a driving force in mining, real estate, infrastructure, and logistics, transforming ideas into iconic destinations.

Our journey in real estate began in Kankurgachi with Orchid Point and Orchid Towers—a transformation of 100,000 sq. ft. of retail space, completed in just 14 months. It was the spark that set the tone for everything we’ve built since.

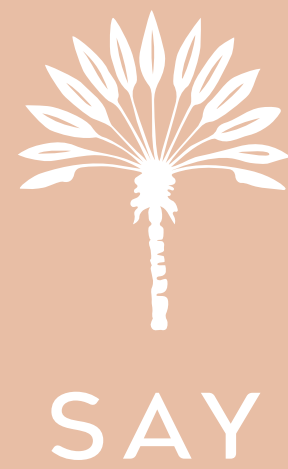
Next came DTC Southern Heights in Joka—a master-planned community spanning 20 acres. With 900 homes delivered and a 40,000 sq. ft. clubhouse (one of South Kolkata’s largest), this flagship project didn’t just redefine affordable living; it earned accolades like ‘Best Affordable Housing Project of the Year’ from ET Realty, CREDAI Bengal, and Realty+. With a 5-star CRISIL rating, every square foot speaks of our commitment to excellence.

Now, we raise the bar with DTC Capital City in Rajarhat—one of the largest residential projects in the region. Designed to elevate modern living, every detail reflects our passion for creating homes that inspire, delight, and endure.

To date, DTC Group has delivered 1.5 million sq. ft. of thoughtfully designed spaces, with an additional 3 million sq. ft. currently under construction. Guided by our mantra—“Commit, Deliver, Grow”—we’re building not just homes but vibrant, sustainable communities where life flourishes.



WHERE EVERY SQUARE FOOT TELLS A STORY,
AND EVERY PROJECT BUILDS A LEGACY.



'I DO' TO PALM GROVE

Now that you've seen all that Palm Grove has to offer, it's time to make a choice. Are you ready to start your love story? Come, visit us, and let's make your dream home a reality. Palm Grove - where your date with life begins.



Headquarters:

DTC Projects Pvt. Ltd.

1 Netaji Subhash Road, Kolkata 700001, West Bengal, India

Contact 033 2248 5582 Email contactus@dtcgroup.in

website www.dtcgroup.in

Site Address:

D.H. Road, Joka, WB

Contact +91 98305 85856 Email marketing@dtcgroup.in

website www.dtcsojon.com

Disclaimer: The images shown in the brochure are the architect's expression and are for illustrative purposes only. The furniture shown in the plan is for layout purposes only and not provided by the developer. The flat layout and dimensions will be as per the sale agreement. Specification and master plan amenities are for induction and for representation only, final amenities and specifications will be as per sales agreement.