

COME, EMBRACE  
YOUR DREAMS



COME, EMBRACE  
YOUR DREAMS

The logo features the word "CASA" in a small, dark blue, sans-serif font above the word "Dreamville" in a larger, bold, dark blue, sans-serif font. A small icon of three birds flying is positioned above the "D" in "Dreamville". The entire logo is underlined with a thin dark blue line.

**CASA**  
**Dreamville**

# APPEASE LIFELONG AMBITIONS

True to its name, Casa Dreamville boasts 117 houses and a lifestyle that is no less than your dream. It boasts of amenities that pamper, location that facilitates convenience and construction standards that inspire one and all. This is an address that appeases all your ambitions of high-class living.



1, 2 & 3 BHK  
Homes



G + 6 Storied  
Residential  
Building



Located At  
Iskcon Mandir  
Road, Siliguri



Showcasing  
Luxurious  
Amenities



Vastu  
Compliant





DAY VIEW



CASA  
Dreamville



## CAPITALISE ON INSTANT CONNECTIVITY

The location of this project is a boon for anyone who values time. It has been developed in close proximity to medical facilities, commercial areas, religious buildings and the check post. Blessed with convenience, instant connectivity is truly a necessity to make the most of your time.





## NESTLE AMIDST ENCHANTING SERENITY

Here is an abode that allows you to imbibe the gifts of nature every day. Designed with landscaped gardens and a dedicated area for kids' activities, Casa Dreamville ensures you nestle amidst peace and serenity with loved ones by your side.



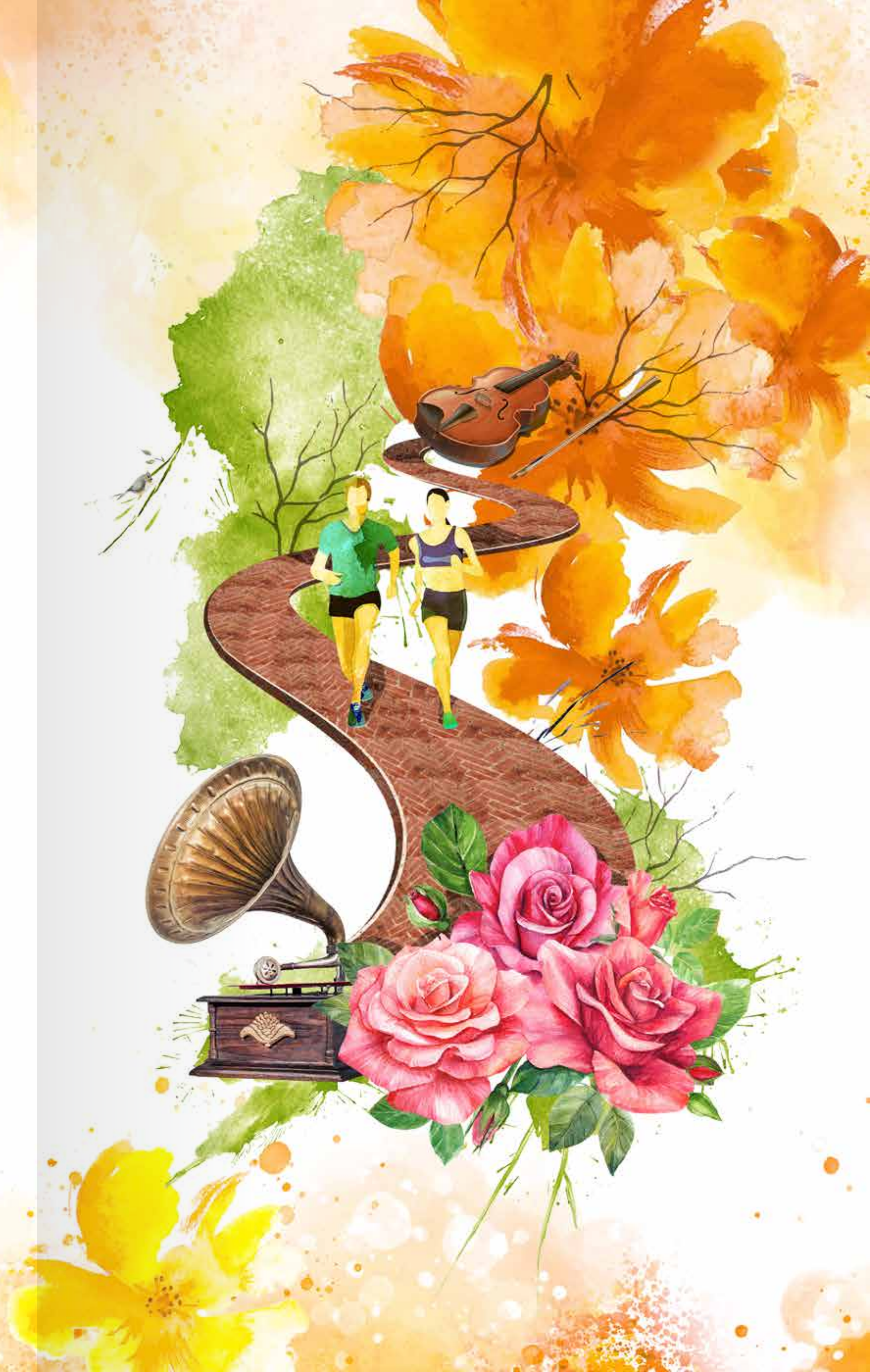
Landscaped  
Garden



Kids' Play  
Area



Rooftop Yoga /  
Meditation Deck





KIDS' PLAY AREA





## ENCOUNTER A MAGNUM OPUS

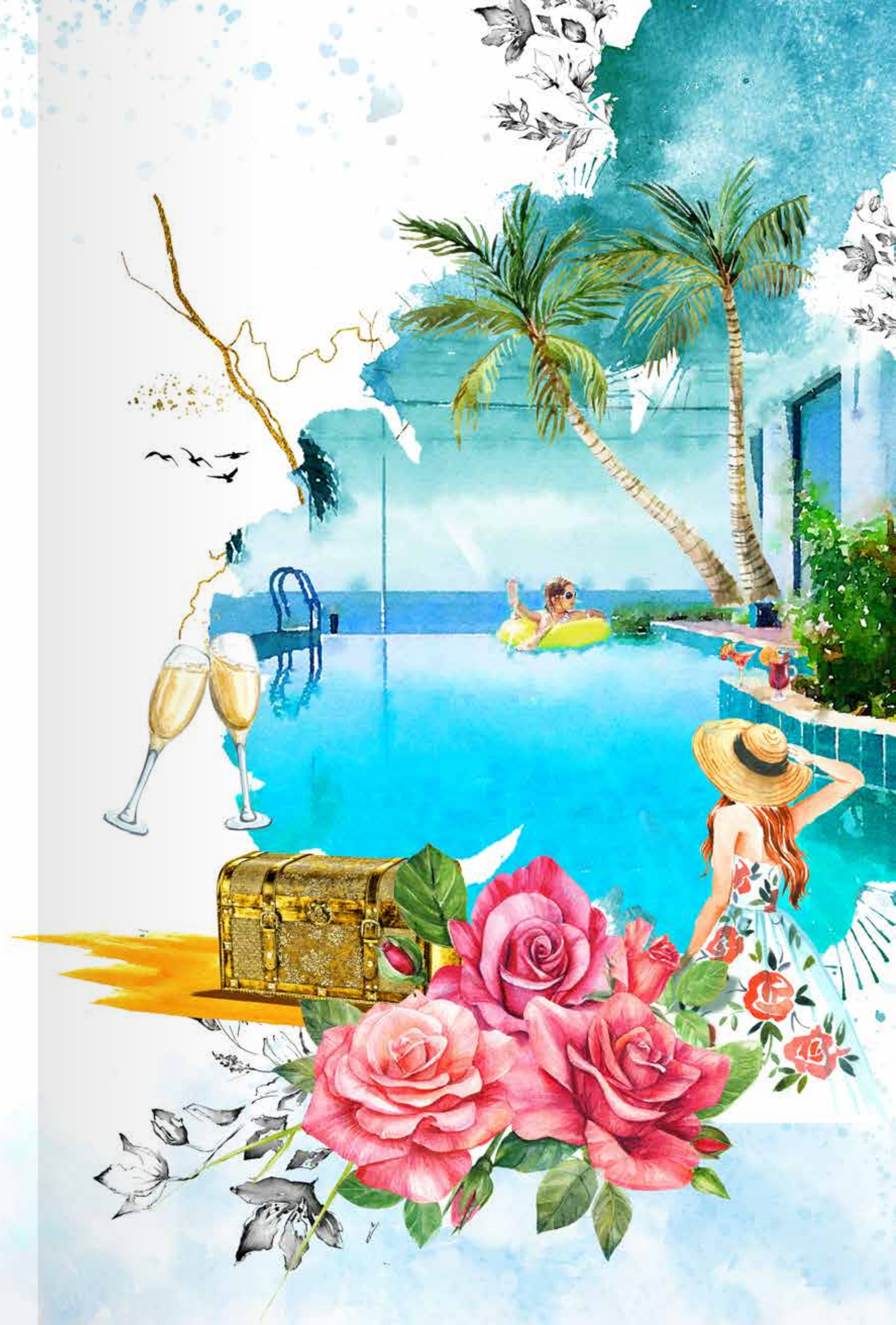
As soon as you step into Casa Dreamville, your tryst with luxury begins. Be it the expansive space or the intelligently-designed badminton court, be it the rooftop yoga deck or the soul soothing meditation garden, be it the modern and fully-equipped gym or the refreshing kids' pool - all the opulent amenities here await your arrival.



Kids' Pool



Badminton Court





SWIMMING POOL





# EMBRACE YOUR POWER TO WIN

Featuring a spacious indoor game room and a well-equipped ultra-luxurious gym, Casa Dreamville is designed to make you lead a healthy and happy lifestyle. So, come. Put on your gloves, pull up your socks. Because fitness is not about only burning calories, but also igniting the winning spirit that lies within you.





BIRD'S EYE VIEW





## CELEBRATE LIFE IN ALL ITS GLORY

What's life without celebrating moments, memories,  
and little magic? Your home at Casa Dreamville is  
magnanimous, and so is its community hall.  
Well-organised and spacious - it is all set to make you  
celebrate life's best moments with the ones you love.

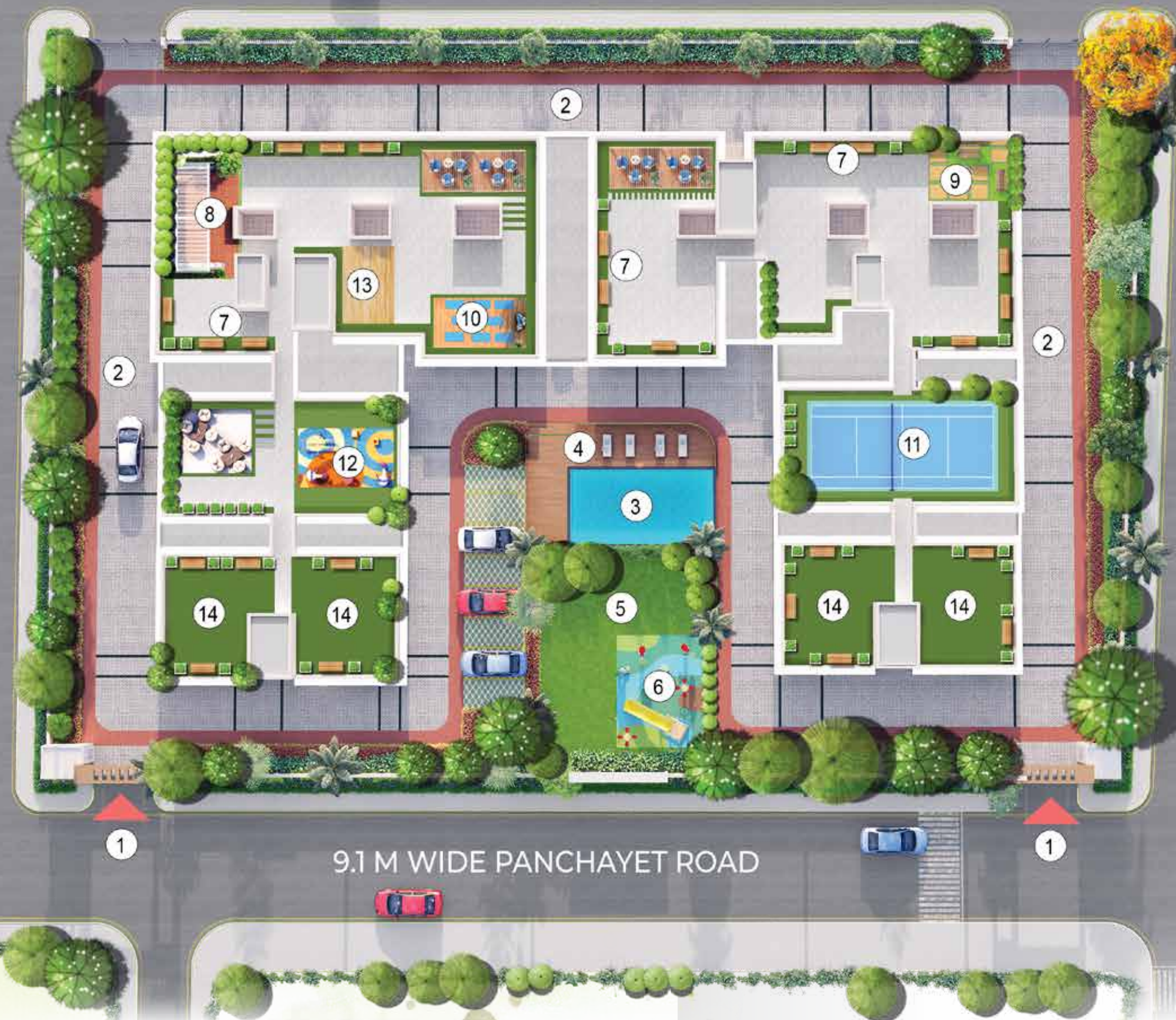


Community Hall





## SITE PLAN



## LEGEND

1. Entry / Exit
2. Internal Driveway
3. Kids' Swimming Pool
4. Wooden Deck
5. Central Lawn
6. Kids' Play Area
7. Seating Area
8. Seating Area With Canopy
9. Senior Citizen Adda Zone
10. Rooftop Yoga
11. Badminton Court
12. Rooftop Kids' Play Area
13. Meditation Zone
14. Private Terrace





FIRST TO SIXTH FLOOR PLAN



Flat No.	A	B	C	D	E	F	G	H	J	K	L	M	N	P	Q	R	S	T	U	V
Type	3 BHK	3 BHK	2 BHK	3 BHK	2 BHK	3 BHK	3 BHK	1 BHK	3 BHK	3 BHK	3 BHK	3 BHK	1 BHK	3 BHK	3 BHK	2 BHK	3 BHK	3 BHK	3 BHK	3 BHK
Open Terrace (First Floor)	190	254	166						135	133	143	141	92	154	152			133	211	175
Carpet Area (RERA Area)	739	779	576	745	620	831	832	342	742	783	751	788	359	759	763	622	817	724	733	742
Built Up Area (Including Balcony & External Wall)	863	899	675	861	722	959	951	430	864	904	877	912	456	874	884	726	944	829	851	861
SBUA	1211	1261	947	1208	1013	1345	1334	603	1211	1267	1234	1284	641	1230	1244	1022	1328	1166	1198	1212

\*RERA Area - Carprt Area Excluding Balcony & External Wall



## SPECIFICATIONS

### STRUCTURE

Earthquake Resistance RCC Framed

### WALLS

Internal - Wall Putty

External - Painted in combination of Acrylic & Textured paint finish

### FLOORING

Combination of Ceramic and Vitrified Tiles

### KITCHEN

Wall - Ceramic Tiles up to 2 feet above counter

Counter - Granite Top with Stainless Steel Sink

### TOILET

Walls - Glazed Ceramic Tiles up to Door Height

Fittings - C.P. fittings of premium quality with Hot & Cold line

Sanitary – White Vitrified sanitary ware & wall mounted E.W.C.

### DOORS

Frames - Wooden or WPC frames

Shutter – Flush Wooden Doors with hardware fitting

### WINDOWS

Aluminum Sliding Windows

### ELECTRICAL

Wiring - Concealed wiring with fire resistant ISI grade copper conductors & Protective MCB

Switches – Elegant Modular Switches





DAWN VIEW





# BANK UPON TRUST & EXCELLENCE

Committed to delivering promises, PR Realty, Anand Mangal & Samridhhi Group give immense importance to fine detailing, quality construction, exemplary professionalism and customer's trust. This collaboration aims to provide a range of high-end projects that are a wonderful blend of modern amenities and new-age luxury. With dreams in their minds, and crafts in their hands, they strive to make this world a better place to live.

## PAST PROJECTS



GREEN MEADOWS  
Matigara, Siliguri



THE PACIFIC  
Matigara, Siliguri



SIKKIM PLAZA  
Sevoke Road, Siliguri



MAYFAIR BLISS  
Nirmala School Road, Siliguri

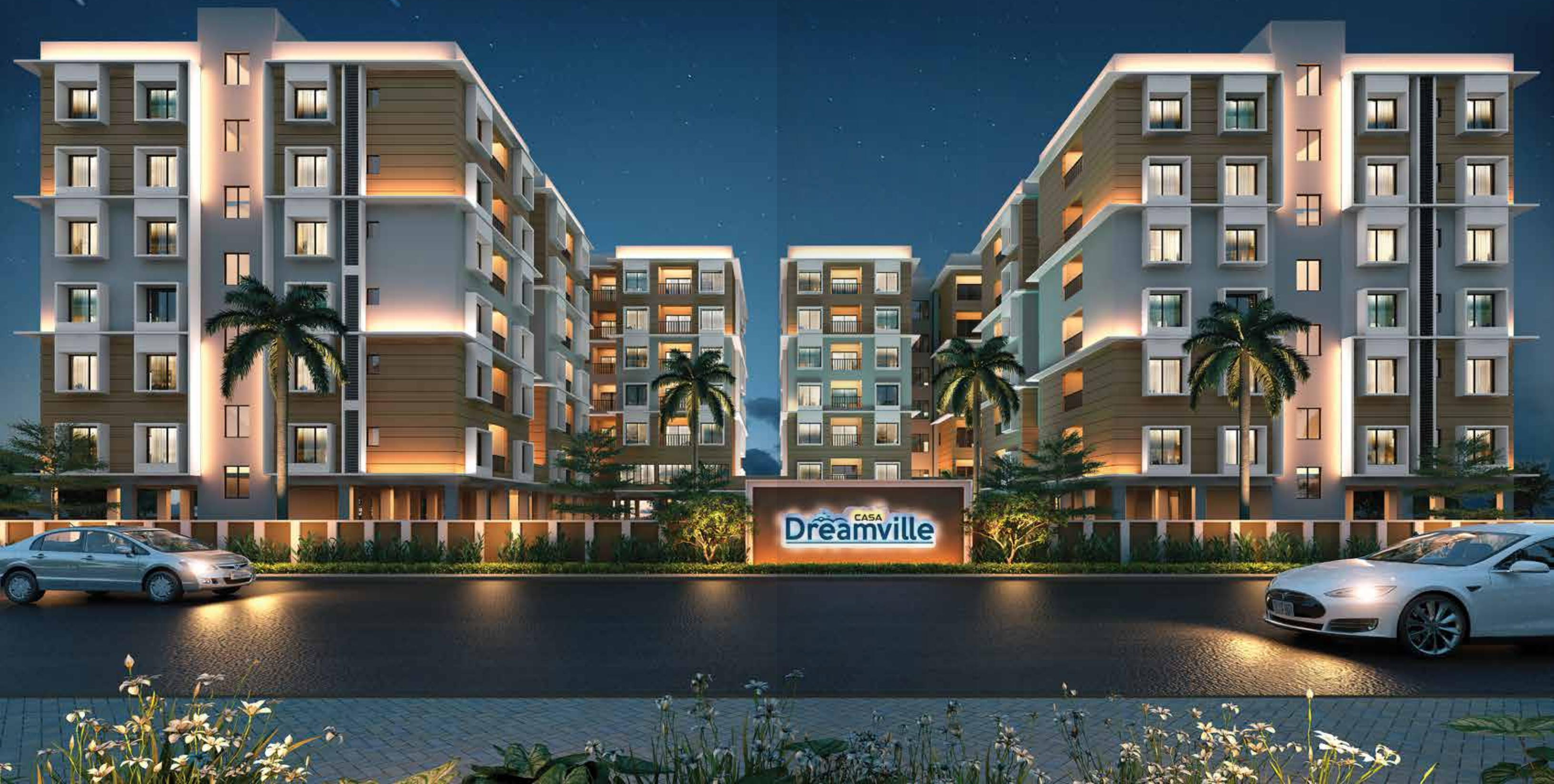


SHANTI NIKETAN  
Rajbari, Jalpaiguri





NIGHT VIEW







DEVELOPED BY



PR REALTY  
Construction via creation



ANAND MANGAL  
GROUP  
REAL ESTATE



SITE ADDRESS

📍 Shanti Colony, North Ektiasal,  
Baneshwar More, Bylane Eastern Bypass,  
Bylane Iskcon Mandir Road,  
Siliguri – 734004

GST - 19AAOFN6481G1ZP

📞 **90382 10101**

MEMBER OF



RERA REGISTRATION NO.: WBRERA/P/JAL/2023/000516

DISCLAIMER

All details in this brochure are for easy information and content purpose only and do not form any integral part of the agreement.  
This document is tentative and developers reserve the right to make variations and modifications.





DEVELOPED BY



**PR REALTY**  
Construction via creation



**ANAND MANGAL  
GROUP**  
REAL ESTATE



SITE ADDRESS

📍 Shanti Colony, North Ektiasal,  
Baneshwar More, Bylane Eastern Bypass,  
Bylane Iskcon Mandir Road,  
Siliguri – 734004

GST - 19AAOFN6481G1ZP

🌐 [WWW.GETMYGHAR.COM](http://WWW.GETMYGHAR.COM)

✉ [INFO@GETMYGHAR.COM](mailto:INFO@GETMYGHAR.COM)

☎ **+91 90382 10101**

MEMBER OF



RERA REGISTRATION NO.: WBRERA/P/JAL/2023/000516

**DISCLAIMER**

All details in this brochure are for easy information and content purpose only and do not form any integral part of the agreement.  
This document is tentative and developers reserve the right to make variations and modifications.